



Stream Fencing and Buffer



Cattle Crossing to protect stream beds and stream banks



Watering System in a pasture, with reinforced gravel pad



Mortality Composting facility



Manure Storage structures



Newly constructed Grassed Waterways

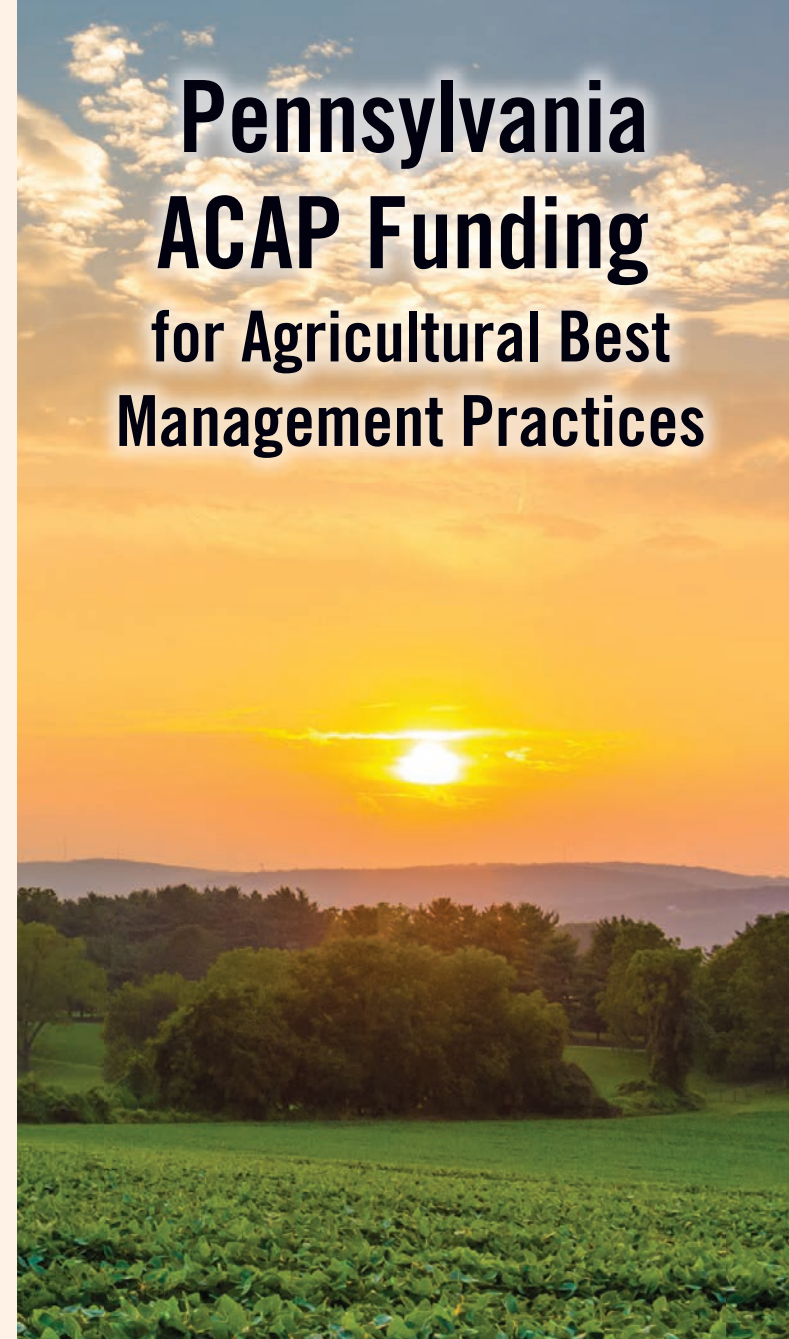


More Info:

https://www.agriculture.pa.gov/Plants_Land_Water/StateConservationCommission/ACAP/Pages/default.aspx

<https://extension.psu.edu/water/conservation-practices-and-training>

Pennsylvania ACAP Funding for Agricultural Best Management Practices



Created through the Clean Streams Fund, ACAP (Agricultural Conservation Assistance Program) provides financial and technical assistance for the implementation of best management practices in Pennsylvania.

Administered by the PA State Conservation Commission (SCC) and delegated County Conservation Districts.



With \$154 Million in dedicated money, ACAP will be used to reduce nutrient and sediment pollution in streams, rivers and waterbodies through implementation of agricultural BMPs. It is a statewide program, implemented primarily by County Conservation Districts.

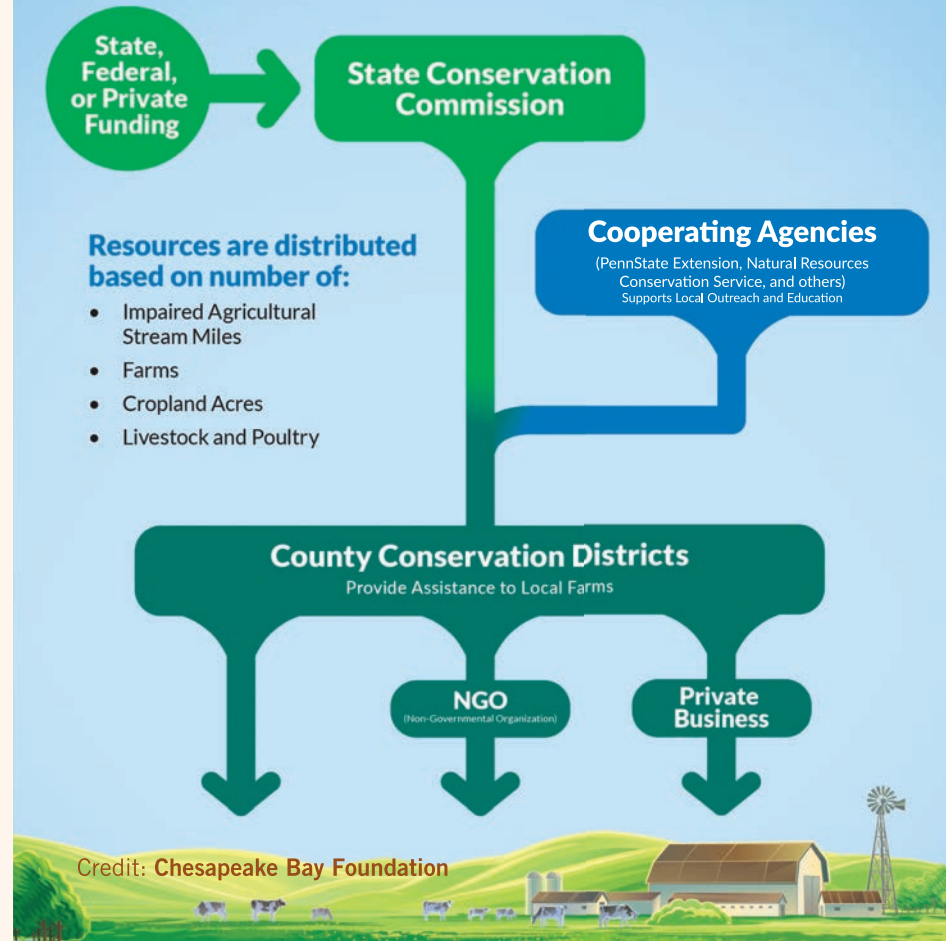
When evaluating applications for eligible projects under ACAP, participating Conservation Districts will prioritize complete applications based upon the following criteria such as:

- BMP is part of a conservation plan or Ag E&S plan and a manure management or nutrient management plan. Development of such plans is an eligible expense.
- BMPs that control nitrogen or phosphorus or sediment.
- All Animal Concentration Areas (ACAs) on the farm are or will be treated to abate storm water runoff, or loss of sediment and/or nutrients from the ACA.
- Proximity to surface waters, public drinking water sources or karst geology with underground drainage systems or open sinkholes.
- Projects must meet the design and construction standards established by the Commission.
- Any other criteria considered by the Conservation District, as applicable, and approved by the Commission.

All PA counties will be able to receive assistance. Applicants can apply for ACAP through their County Conservation District. Application deadlines are established by the different Conservation Districts. Percentage of cost share is established by each Conservation District. If a District is not administering ACAP, the State Conservation Commission or it's designee, will.

If you need to contact your County Conservation District, visit https://pacd.org/?page_id=59 for contact information.

How ACAP Sets Pennsylvania Farmers up for Success



Applications are available from, and should be returned to the delegated County Conservation Districts, if your Conservation District will be handling the administration.

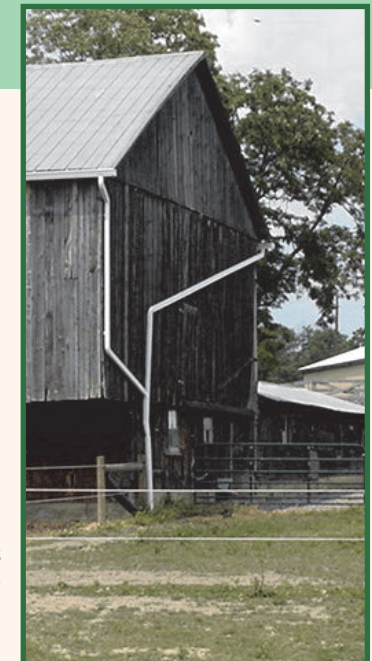
When the local Conservation District will not be administering the program, applications should be submitted to the SCC office.

The ACAP Application is also available online:

https://www.agriculture.pa.gov/Plants_Land_Water/StateConservationCommission/ACAP/Documents/FY_22-23_Application-draft_12.122.pdf



Roofed Concrete Manure Stacking area



Roof Runoff Controls benefit water quality